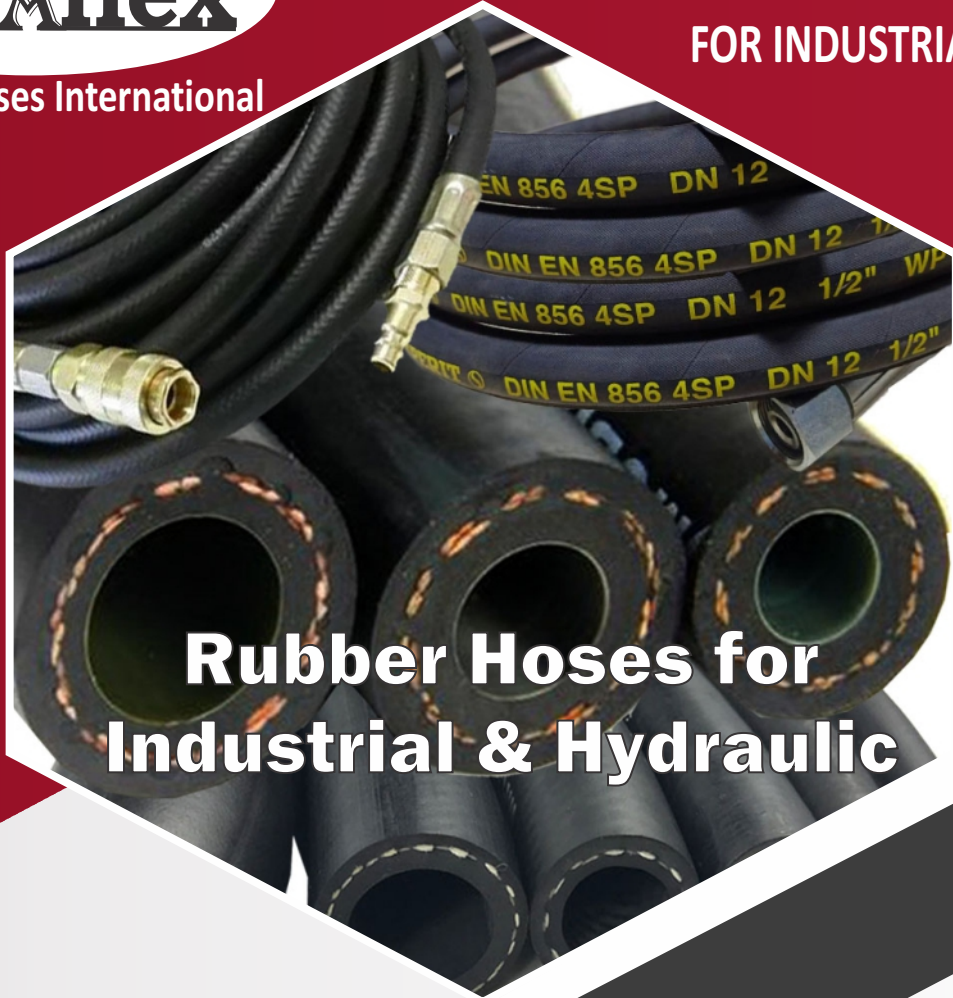


flexaflex

Flexaflex Hoses International

THE ULTIMATE DESTINATION
FOR INDUSTRIAL FLEXIBLE HOSES



Rubber Hoses for Industrial & Hydraulic

OUR PROFILE

Flexaflex Hoses International are the Leading Hose Suppliers in Ahmedabad, Gujarat, India actively engaged in importing technical industrial hoses from Germany and Europe, Taiwan & China and catering pan India.



Pooja Shah - Sales
+91-99784 42215
+91-70690 96458



flexaflexhoses@gmail.com



www.flexaflexhoses.com
www.hosesmarket.com



Chirag Shah - Technical
+91-79903 36570

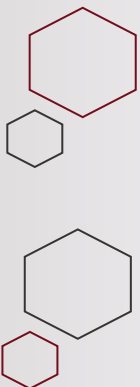


S.D. Shah - Director
+91-90990 16044



FLEXAFLEX HOSES INTERNATIONAL

106, First Floor, Kailashpathi Chamber,
Nr. Sunrise Restaurant, Reid Road,
O/S Panchkuva Gate, Ahmedabad - 380 002





AIR DRILL BLACK HOSE
 Range : 20 mm to 75 mm ID
 W.P. 34.5 kg/cm²
 Temp. -30°C to +82°C
 Black / Yellow cover
 (Flame Retardant - Yellow Colour)



ROCK DRILL HOSE
 Range : 6 mm to 50 mm ID
 W.P. 14 / 18 / 21kg/cm²
 Temp. -30°C to +82°C
 I.S. 446 Type -III



HEAVY ROCK DRILL HOSE
 Range : 20 mm to 100 mm ID
 W.P. 16 & 25 kg/cm²
 Temp. -30°C to +82°C
 I.S. 446 : 1987 Type -III



ROCK DRILL HOSE WIRE BRAIDED
 Range : 20 mm to 75 mm ID
 W.P. 40 to 60 kg/cm²
 B.P. 150 to 240 kg/cm²
 Temp. -30°C to +82°C



AIR AND WATER HOSE
 Range : 12.5 mm to 100 mm ID
 W.P. 12 kg/cm²
 Temp. -30°C to +82°C
 I.S. 446 Type - I / I.S. 444 Type - II



PNEUMATIC TOOL HOSE
 Range : 6.3 mm to 50 mm ID
 W.P. 14 kg/cm²
 Temp. -30°C to +82°C
 I.S. 446 : 1980 Type II



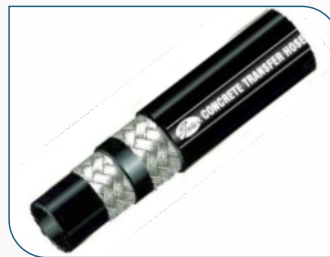
FDA-GRADE CHEMICAL HOSE UHMWPE
 Range : 19 mm to 102 mm ID
 W.P. 16 kg/cm²
 Temp. -25°C to 100°C
 Steam Cleaning upto +130°C (for Max 30 Minutes)



XLPE CHEMICAL HOSE SOLVENT HANDLING HOSE
 Range : 25 mm to 50 mm ID
 W.P. 14 kg/cm²
 Temp. -30°C to 90°C
 Steam Cleaning upto +130°C (for Max 30 Minutes)



SAND BLAST HOSE SHOT BLAST HOSE
 Range : 20 mm to 75 mm ID
 W.P. 7 / 10 / 12 kg/cm²
 Temp. -40°C to +70°C
 IS 5894 : 1980 Type I and Type II



CEMENT GROUTING HOSE CONCRETE TRANSFER HOSE
 Range : 25 mm to 100 mm ID
 W.P. 10 & 85 kg/cm²
 B.P. 30 & 255 kg/cm²
 Temp. -40°C to +70°C
 IS 5137 : 1990



CARBON FREE HOSE
NON - Conductive Hose
 Range : 12.7 mm to 76.2 mm
 W.P. 14 to 17 kg/cm²
 B.P. 56 to 69 kg/cm²
 Temp. -40°C to +100°C



LONGWALL MINE HOSE
 Two Steel Braided
MSHA
 Range : 63.5 mm & 76.2 mm
 W.P. 69 kg/cm²
 B.P. 276 kg/cm²
 Temp. -40°C to +100°C



SLURRY SUCTION HOSE
 Range : 31 mm to 150 mm
 W.P. 10 kg/cm²
 Temp. -40°C to + 70°C



WATER SUCTION & DISCHARGE HOSE
 Range : 6.3 mm to 50 mm
 W.P. 7 & 10 kg/cm²
 Temp. -25°C to +70°C
 IS 3549 : 1983 Type I & Type II



STEAM HOSE

Range :12.7 mm to 50 mm

W.P. 7 kg/cm²

Temp. - 165°C

IS : 5122: 1975 Type II



STEAM HOSE SINGLE WIRE

Range :20 mm to 50 mm

W.P. 10 kg/cm²

B.P. 100 kg/cm²

Temp: - 40°C to +195°C

IS: 10655 Type 2 & B.S. : 5342 Type 1



SUPER STEAM HOSE DOUBLE WIRE BRAIDED

Range :12.7 mm to 50 mm

W.P. 17 kg/cm²

B.P. 170 kg/cm²

Temp. -40°C to +232°C

IS : 10655 Type 3 & B.S. : 5342 Type 2



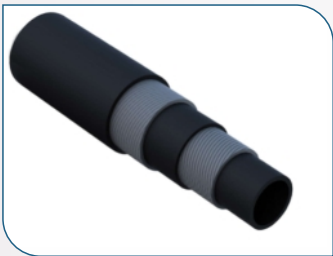
EPDM - FDA STEAM HOSE

FOOD GRADE

Range :19 mm & 25 mm

W.P. 6 kg/cm²

Temp. -40°C to +164°C



HOT WATER HOSE

Range :12.5 mm to 75 mm

W.P. 7 kg/cm²

B.P. 21 kg/cm²

Temp. -30°C to + 100°C

IS 5821/79



STATIC CONDUCTIVE HOSE

Range:6.3 mm to 50 mm

W.P. 30 to 37 kg/cm²

B.P. 90 to 110 kg/cm²

Temp. -40°C to +100°C



BREWERY HOSE

FOOD GRADE

Range: 22 mm to 100 mm

W.P. 10 kg/cm²

B.P. 30 kg/cm²

Temp. -40°C to +100°C



FDA - PHTHALATE FREE HOSE MILK, DAIRY PRODUCTS & FATTY FOOD

Range: 25 mm to 102 mm

W.P. 10 kg/cm²

B.P. 30 kg/cm²

Temp. -20°C to +90°C

Steam Cleaning upto +130°C (for Max 30 Minutes)



EPDM CHEMICAL HOSE

Range :19 mm to 50 mm

W.P. 12 kg/cm²

B.P. 48 kg/cm²

Temp. -30°C to +100°C



COMPOSITE HOSE

CHEMICAL / OIL / FUEL / AVIATION FUEL / TANKER / DOCK - HOSES

Range :25 mm to 250 mm

W.P. 7 to 14 bar

Temp. -30°C to +80°C



HYDRAULIC HOSES SAE R1 AT & R2 AT

Range :6.3 mm to 50.8 mm

W.P. 40 to 400 kg/cm²

B.P. 163 to 1630 kg/cm²

Temp. -40°C to +100°C



THERMOPLASTIC RUBBER HOSE

AIR / PNEUMATIC / WATER

Air : Range - 6 mm to 50 mm

Air : W.P. 14 to 22 kg/cm²

Water : Range - 12.5 / 20 / 25 mm

Water : W.P. 10 kg/cm²



FLEXIBLE METAL HOSES S.S. CORRUGATED FLEXIBLE HOSES

Stainless steel

AISI 304, AISI 321 and AISI316L

Temp. -270°C to +600°C

EN ISO 10380



SMOOTH BORE PTFE SINGLE & DOUBLE BRAIDED SS 303 / 304

CONVOLUTED PTFE SINGLE BRAIDED SS 304 COLOUR

Outer cover - Silver, Inner layer - Transparent

Temp. -60°C to +260°C

STANDARDS: SAE J517-100R14